



DS3030

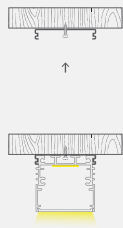
Surface Mounted

Power : 4.8-25.92W/m

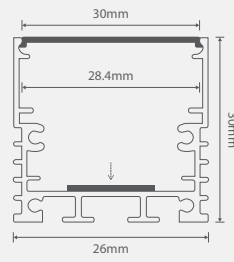
Luminous flux : 480-3110 lm/m

Luminous efficacy : 100-120 lm/W

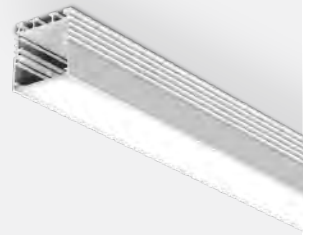
Technical Details



Installation



Dimensions



DS3533

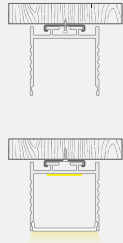
Surface Mounted

Power : 4.8-38.88W/m

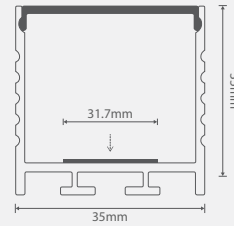
Luminous flux : 480-4665 lm/m

Luminous efficacy : 100-120 lm/W

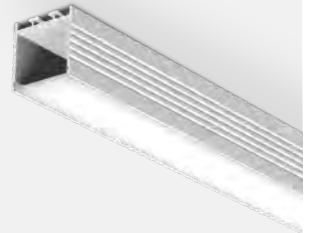
Technical Details



Installation



Dimensions



DS3575

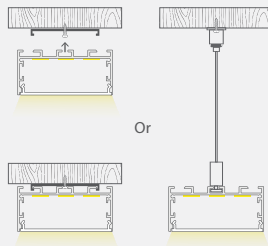
Surface Mounted / Suspended

Power : 25.92-38.88W/m

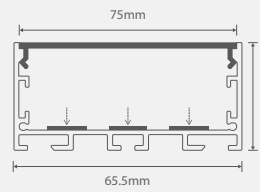
Luminous flux : 3110-4665 lm/m

Luminous efficacy : 120 lm/W

Technical Details



Installation



Dimensions



DP35100

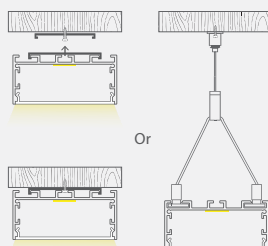
Surface Mounted / Suspended

Power : 25.92-38.88W/m

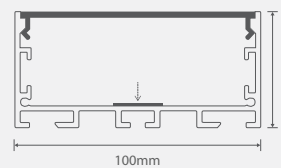
Luminous flux : 3110-4665 lm/m

Luminous efficacy : 120 lm/W

Technical Details



Installation



Dimensions

